

What If I'm Not a Match?

Understanding Your Kidney Donation Options When You're Not a Match for Your Friend or Loved One



NATIONAL KIDNEY REGISTRY®
FACILITATING LIVING DONOR TRANSPLANTS

When You Learn You're Not a Match

If you have decided to donate a kidney to someone and have been approved as a living donor, it can be disappointing to learn that you are not a compatible match and are therefore unable to donate your kidney directly to your intended recipient.

The good news is, you can still help your intended recipient by donating through the National Kidney Registry's Voucher Program.

Understanding the Voucher Program

When you donate through the Voucher Program, your kidney will go to a stranger, and a different stranger's kidney will go to your intended recipient.

Here's how it works:

1. You inform your transplant coordinator that you want to donate through the NKR's Voucher Program.
2. You schedule your kidney donation for a time that is convenient for you. Before your donation, you designate your intended recipient as the person who will receive your voucher and name up to five family members as alternates in case your intended recipient does not end up needing the voucher for any reason.
3. You complete your kidney donation surgery.

How Your Intended Recipient Gets a Kidney

When your intended recipient is ready for transplant surgery, they activate the voucher they received from your donation at any NKR member center.

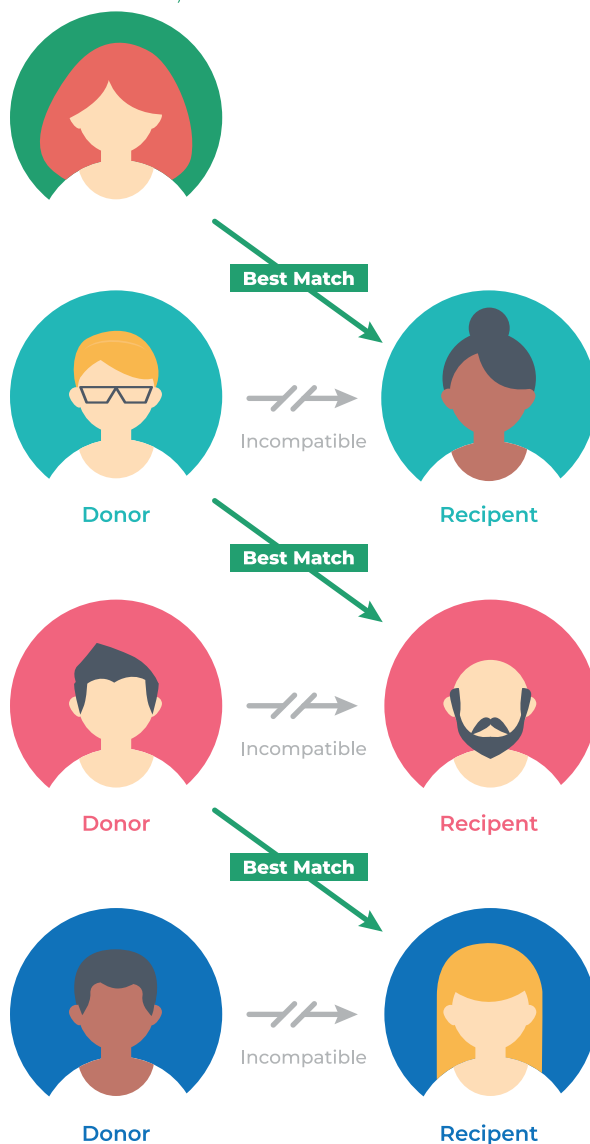
Once the voucher is activated, the NKR will search its pool of living kidney donors to find the best possible match for them.

Once a match is found, the selected donor will donate their kidney at an NKR center of their choosing.

The donor kidney will be safely transported to your intended recipient's center for their transplant surgery.

Chain-starter

(Non-directed or Voucher Donor)





Why Donate Through the Voucher Program?

- Your intended recipient will receive the best possible match from a large pool of living donors.
- Your donation helps your intended recipient and the other patient(s) who receive a donor kidney from the chain you start.
- You will be covered by Donor Shield protections and support.
- In the unlikely event you ever need a kidney transplant in the future, you will be prioritized to receive a living donor kidney through the National Kidney Registry.

For more information, visit
kidneyregistry.com/voucher

